

Groot Onderhoud 2023: Collectiezorg als motor van duurzaamheid?!

M Leuven

16-05-23

INLEIDING

→ Ontstaan Ecoteam

→ Actieplan

→ Afval

→ Bewustmaking

→ Duurzaam beleid

→ Energie

→ HVAC

→ Verlichting

→ Transporten

→ Work in progress

ECOTEAM

- Start in 2013 - Bewustmaking

2020 - ...

- Het groene boekje
- Ki Culture - Ki Futures



LEUVEN
2030



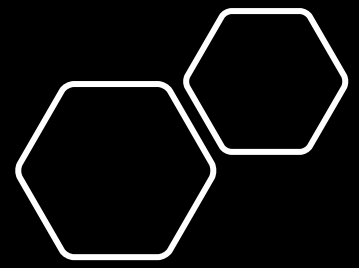
ACTIEPLAN

1. Afval
2. Bewustmaking
3. Duurzaam beleid
4. Energie
5. Water
6. Vergroening

Masterplan Ecoteam

07.11.2020/1/23

NO	CRITERIA	ASPECT	STATUS	REMARKS	DATE	BY	
01.01.01.01.01	Regulation	Room ventilation	Excellent				
		Rooming and occupancy rate occupancy - Range	Excellent				
		FMS follow practice	Fail	Partial - pending	pending	pending	
		Room occupancy rate within a pilot long term	Fail	Below	pending	pending	
	Area and room	Structural proposal	Excellent				
		Details on site measure a practice	Fail	Partial	pending	pending	
		Page reference drawing and location, location on drawings on table	Fail	Below	pending	pending	
		Measure on site for future demand	Fail	Below	pending	pending	
	Energy usage	Location of lighting on and pilot within	Fail	Below	pending	pending	
		Location of lighting on and pilot within	Fail	Below	pending	pending	
		Location of lighting on and pilot within	Fail	Below	pending	pending	
		Location of lighting on and pilot within	Fail	Below	pending	pending	
01.01.01.01.02	Energy usage	M-Source (thermal energy, Hot-Water, energy input?)	Excellent	Hot - Below	pending	pending/pending	
		Room use	Fail	Low			
		Energy M - Reduced M-space	Excellent	Excellent - Below			
		Room use and demand / load/energy	Fail	Partial - Below	pending	pending	
	Area and room	Room use M-Reduction of Energy Input	Fail	Excellent - Below	pending	pending	
		Room location for load/energy flow/energy	Fail	Partial - Below	pending	pending	
		Room use for energy flow	Excellent	Excellent - Below			
		Location for and CO2 related/related	Fail	Below	pending	pending	
	Energy usage	Room use for demand	Excellent	Excellent - Below			
		Energy use E - Room use	Excellent	Excellent - Below			
		Energy use E - Room use	Fail	Partial - Below	pending	pending	
		Energy use E - Room use	Fail	Partial - Below	pending	pending	
01.01.01.01.03	Energy usage	Room use for demand and CO2 related, Demand, Demand, Demand, Demand, Demand, Demand, Demand, Demand, Demand, Demand, Demand, Demand	Excellent	Below - Below			
		Rooming and Demand and area Demand	Fail	Below - High	High		
		Rooming and area Demand	Fail	Below - High	High		
		Rooming and area Demand	Fail	Below - High	High		
	Energy usage	Location of Demand / Demand on location	Fail	Below			
		Energy use Demand	Excellent				
		Energy use Demand	Fail	Below - Below	pending	pending	
		Energy use Demand	Fail	Below - High	High		
	01.01.01.01.04	Energy usage	Room use for Demand on CO2 related Demand	Excellent			
			Location on Demand on Demand and Demand	Excellent			
			Energy use Demand on Demand on Demand	Fail	Partial	High	
			Energy use Demand on Demand on Demand	Fail	Partial	High	
Energy usage		Energy use Demand on Demand on Demand	Fail	Partial	High		
		Energy use Demand on Demand on Demand	Fail	Partial	High		
		Energy use Demand on Demand on Demand	Fail	Partial	High		
		Energy use Demand on Demand on Demand	Fail	Partial	High		
01.01.01.01.05		Energy usage	Room use for Demand on Demand on Demand	Excellent			
			Energy use Demand on Demand on Demand	Excellent			
			Energy use Demand on Demand on Demand	Fail	Partial	High	
			Energy use Demand on Demand on Demand	Fail	Partial	High	
	Energy usage	Energy use Demand on Demand on Demand	Fail	Partial	High		
		Energy use Demand on Demand on Demand	Fail	Partial	High		
		Energy use Demand on Demand on Demand	Fail	Partial	High		
		Energy use Demand on Demand on Demand	Fail	Partial	High		
	01.01.01.01.06	Energy usage	Room use for Demand on Demand on Demand	Excellent			
			Energy use Demand on Demand on Demand	Excellent			
			Energy use Demand on Demand on Demand	Fail	Partial	High	
			Energy use Demand on Demand on Demand	Fail	Partial	High	
Energy usage		Energy use Demand on Demand on Demand	Fail	Partial	High		
		Energy use Demand on Demand on Demand	Fail	Partial	High		
		Energy use Demand on Demand on Demand	Fail	Partial	High		
		Energy use Demand on Demand on Demand	Fail	Partial	High		
01.01.01.01.07		Energy usage	Room use for Demand on Demand on Demand	Excellent			
			Energy use Demand on Demand on Demand	Excellent			
			Energy use Demand on Demand on Demand	Fail	Partial	High	
			Energy use Demand on Demand on Demand	Fail	Partial	High	
	Energy usage	Energy use Demand on Demand on Demand	Fail	Partial	High		
		Energy use Demand on Demand on Demand	Fail	Partial	High		
		Energy use Demand on Demand on Demand	Fail	Partial	High		
		Energy use Demand on Demand on Demand	Fail	Partial	High		
	01.01.01.01.08	Energy usage	Room use for Demand on Demand on Demand	Excellent			
			Energy use Demand on Demand on Demand	Excellent			
			Energy use Demand on Demand on Demand	Fail	Partial	High	
			Energy use Demand on Demand on Demand	Fail	Partial	High	
Energy usage		Energy use Demand on Demand on Demand	Fail	Partial	High		
		Energy use Demand on Demand on Demand	Fail	Partial	High		
		Energy use Demand on Demand on Demand	Fail	Partial	High		
		Energy use Demand on Demand on Demand	Fail	Partial	High		
01.01.01.01.09		Energy usage	Room use for Demand on Demand on Demand	Excellent			
			Energy use Demand on Demand on Demand	Excellent			
			Energy use Demand on Demand on Demand	Fail	Partial	High	
			Energy use Demand on Demand on Demand	Fail	Partial	High	
	Energy usage	Energy use Demand on Demand on Demand	Fail	Partial	High		
		Energy use Demand on Demand on Demand	Fail	Partial	High		
		Energy use Demand on Demand on Demand	Fail	Partial	High		
		Energy use Demand on Demand on Demand	Fail	Partial	High		



1. AFVAL

MATERIAAL ALS GRONDSTOF

- Optimalisatie
- Verminderen
- Hergebruiken
- Verduurzamen
- Upcyclen
- Herbestemmen







1. AFVAL

AFVAL VERMINDEREN

- Hergebruik van materiaal intern
- Hoeveelheid verminderen
- End of life meenemen in projectflow

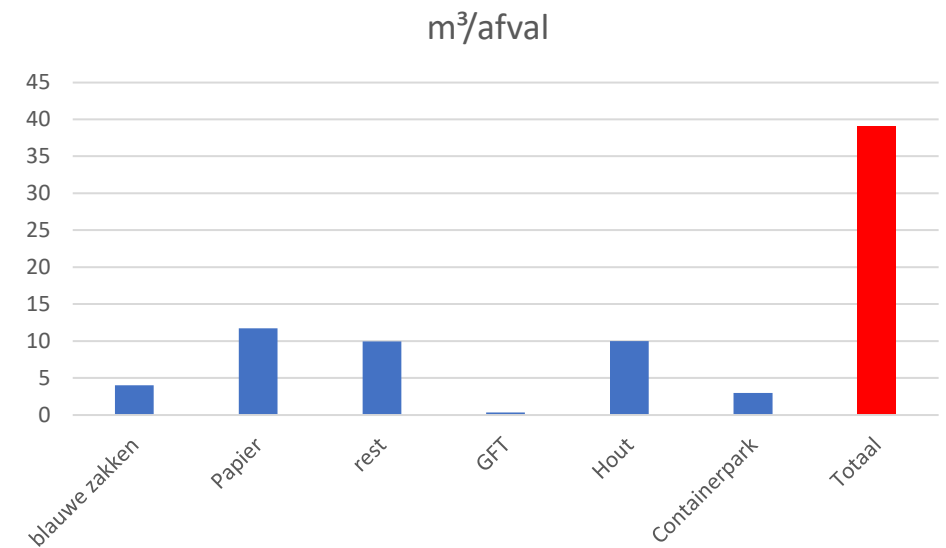
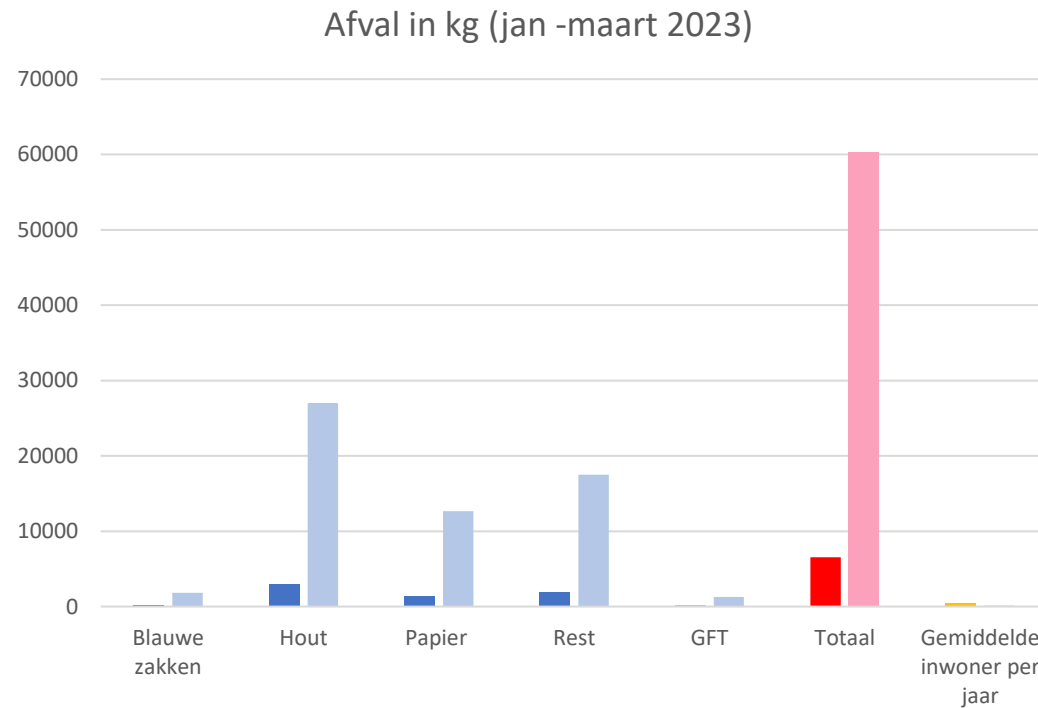
HERBESTEMMEN

- Urban Mining: Materialenbank
- SLAC
- Andere organisaties
- Inzamelacties
- Personeel



1. AFVAL

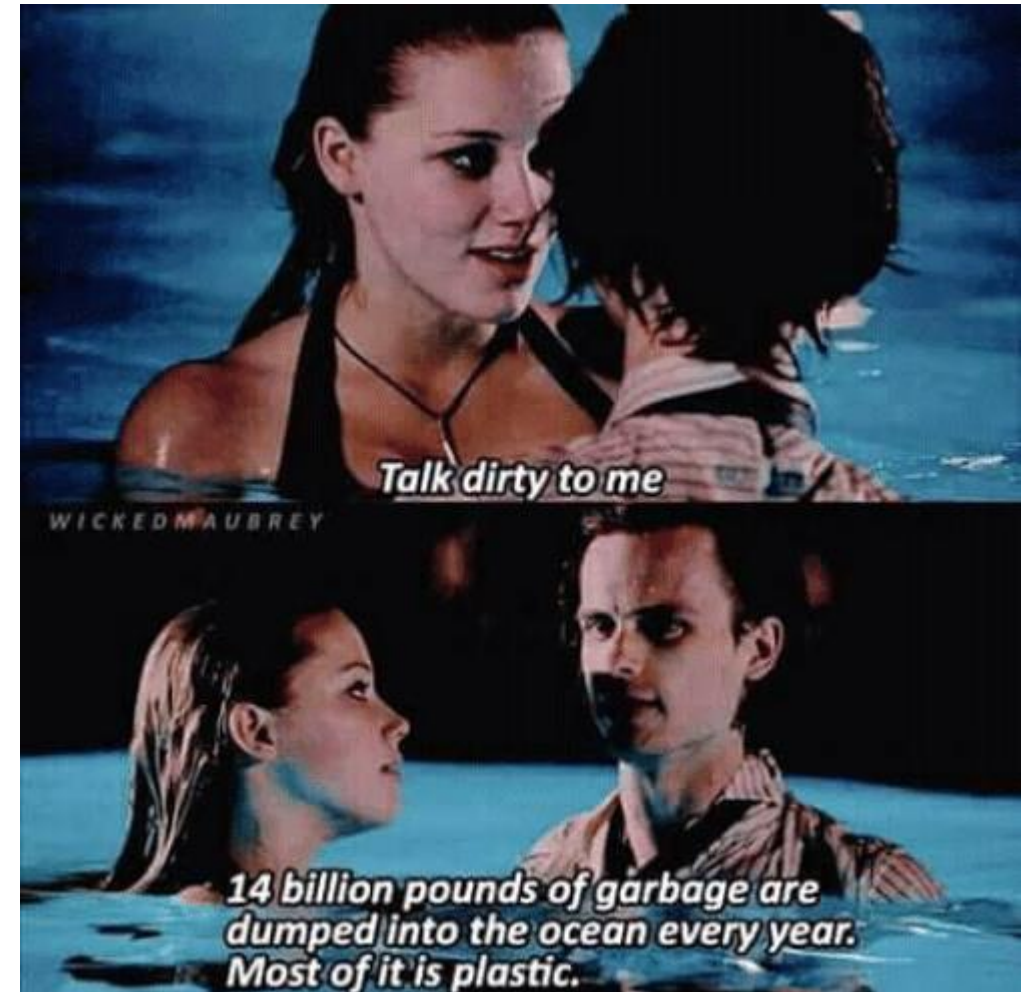
AFVAL AUDIT



1. AFVAL

RECYCLEREN

- Beter recycleren
- Recycling overeenkomst bij aankoop
- Recupel – Pick Up



2. BEWUSTMAKING

→ Informatie delen met collega's

→ Nieuwsbrief

→ Keuken

→ Medewerkersmoment

→ Workshop afvalvrij leven

→ Personeelsfeest - personeelsdag

→ Netwerken – samenwerking met studenten

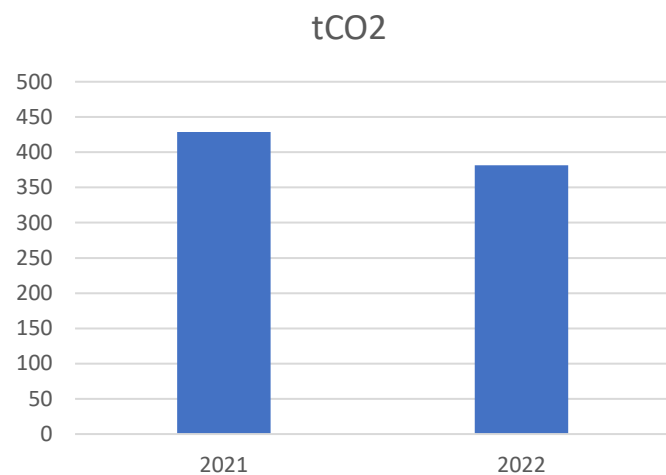


3. DUURZAAM BELEID

- Nota voor afval
- Nota tentoonstellingen →2023
- Criteria in bestekken
- Duurzame evenementen



4. ENERGIE



<https://galleryclimatecoalition.org/carbon-calculator/>

→ Nog een lange weg te gaan



4. ENERGIE

- WWK voor warmte en elektriciteit 2017
- ECOOB: 112 zonnepanelen 2019
- Efficiënt koelingssysteem 2022
- Elektrische bestelwagen 2023
- Thermografie 2023

- Relighting → 2023-2024
- Extra zonnepanelen? → 2024-2025



4. ENERGIE - HVAC

→ BINNEN KLIMAAT – BIZOT Green protocol of klimaatverklaring

Voor de meeste objecten zullen ruimere klimaatomstandigheden dan die tot nu toe gehanteerd worden geen of minimale schade veroorzaken. Een **relatieve vochtigheid (RV)** binnen het bereik van **40%-60%** met **schommelingen** van **maximaal 10% RV** per 24 uur binnen dit bereik, en een temperatuur in het bereik 12-26°C vormen een goed uitgangspunt.

→ Problematiek:

- Leveranciers en contracten voor onderhoud HVAC-systeem
- Bruikleeneisen
- Techniek – tentoonstellingen – conservator – depotbeheerder
- Niet genoeg dataloggers

4. ENERGIE - Verlichting

→ Knoppen en sensoren

→ Stekkers uittrekken

→ Nog geen sensoren in tentoonstellingszalen



4. ENERGIE - Transporten

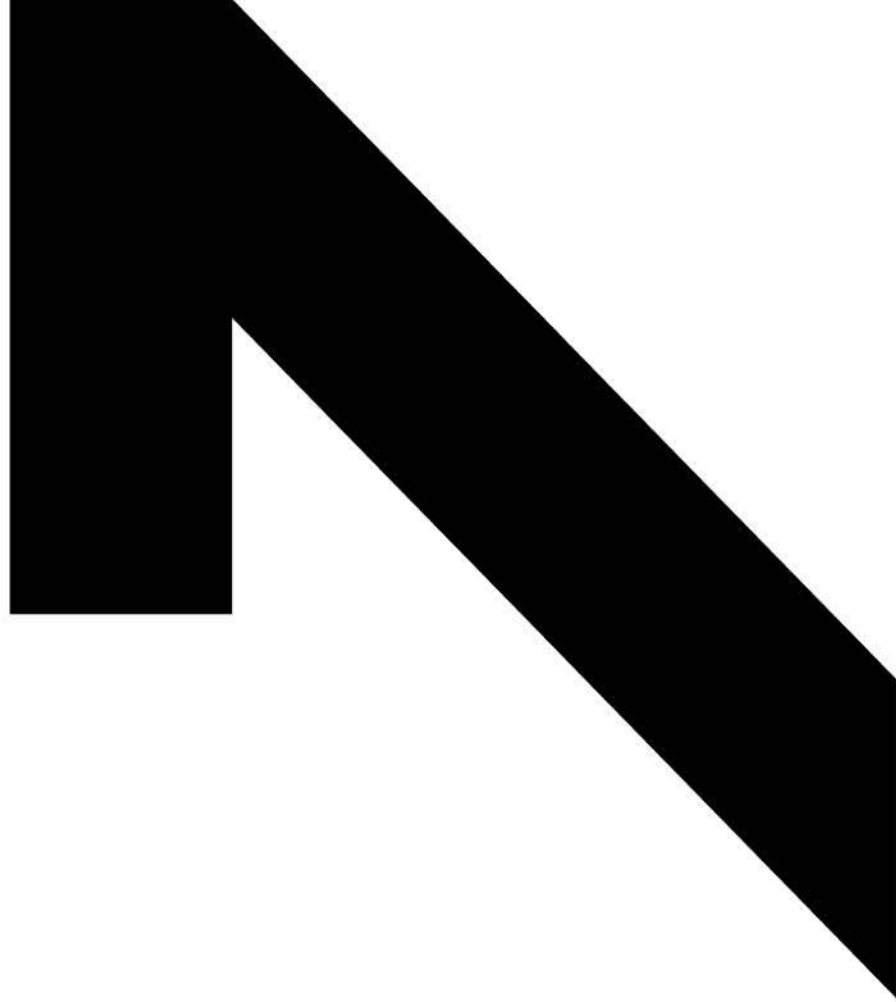
- Bakfiets
- Elektrische bestelwagen
- Kunsttransporten
- Reizen -koerier



WORK IN PROGRESS ...

- Bewustwording medewerkers en bezoekers
 - HVAC
 - Relighting
 - Hernieuwbare energie
 - Digitalisering
-
- Soms te weinig expertise of tijd om grote stappen te zetten
 - Directie en collega's staan zeker achter het actieplan!





L. Vanderkelenstraat 28, 3000 Leuven
www.mleuven.be

 M Leuven  m.leuven



VLAAMS STEUNPUNT VOOR CULTUREEL ERFGOED