



An Eco Lens on Things

Bridget McKenzie

climatemuseumuk.org

climatemuseumuk@gmail.com follow us on [@climatemuseumuk](https://twitter.com/climatemuseumuk)

What we'll do

- Introduction and What is an eco lens?
- An eco lens on 'the crisis'
- An eco lens on culture & museums - pathways of action
- An eco lens on collections - explore a tool for narrative design



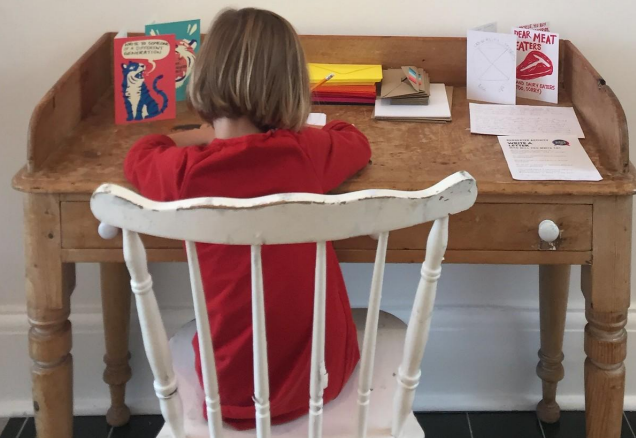
Climate Museum UK

An **experimental** museum supporting and gathering responses to the Earth crisis.

A **distributed** museum of creative people based in the UK, and online, we produce and gather art, objects, ideas, games and books, and then use these to activate people.

These **activations** help people to play, make, think and talk about the Earth crisis and to open their imaginations to possible futures.

climatemuseumuk.org





culture declares
a climate and ecological
emergency



We are a growing movement of people in arts and culture declaring a climate and ecological emergency. We pledge to tell truths, take action and seek justice. Arts and culture can lead in creating a regenerative future that protects the planet and sustains everyone, everywhere.

DONATE

Possitopia Norwich: walkshops LARP-style



Possitopia Norwich Walkshop Your invitations to shift perspective



You are Emma Turner, aged 34 in 1901, a photographer who spends months each year on a houseboat on Norfolk rivers observing birds. Interested in nesting habits and nurture.

Using **sight** to observe species, habitat & shifts in climate

Asking the question: What can we learn from birds and other species about how to settle in place and care?

WORD: NESTING

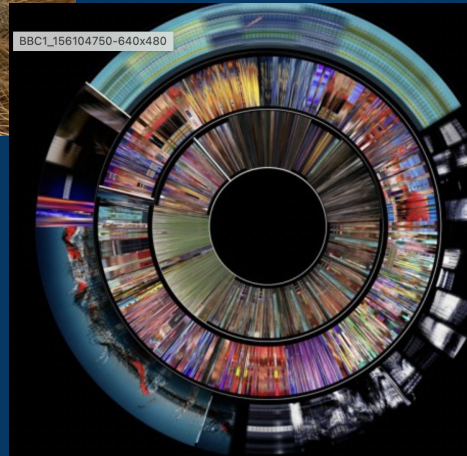
What is an eco lens?

A practice of seeing ecocentrically, in different ways

More-than-human view



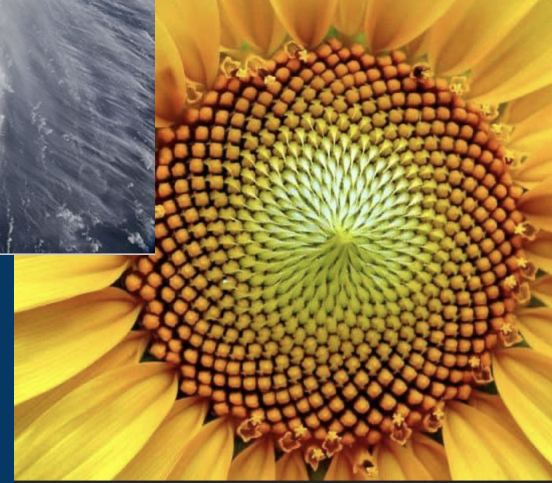
Expanded view



Aware of the crisis



Learning from nature



An eco lens on the crisis?

Polycrisis, Permacrisis, Metacrisis...?

Pandemic, wars, inequality, energy...

Many don't see the planet in this big picture

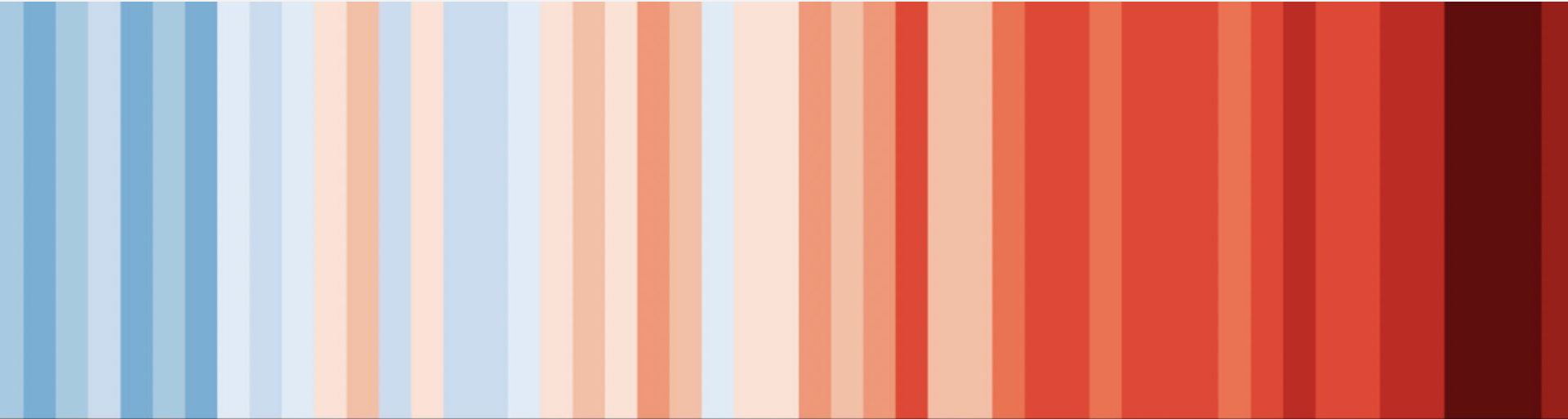
facebook

+ Create



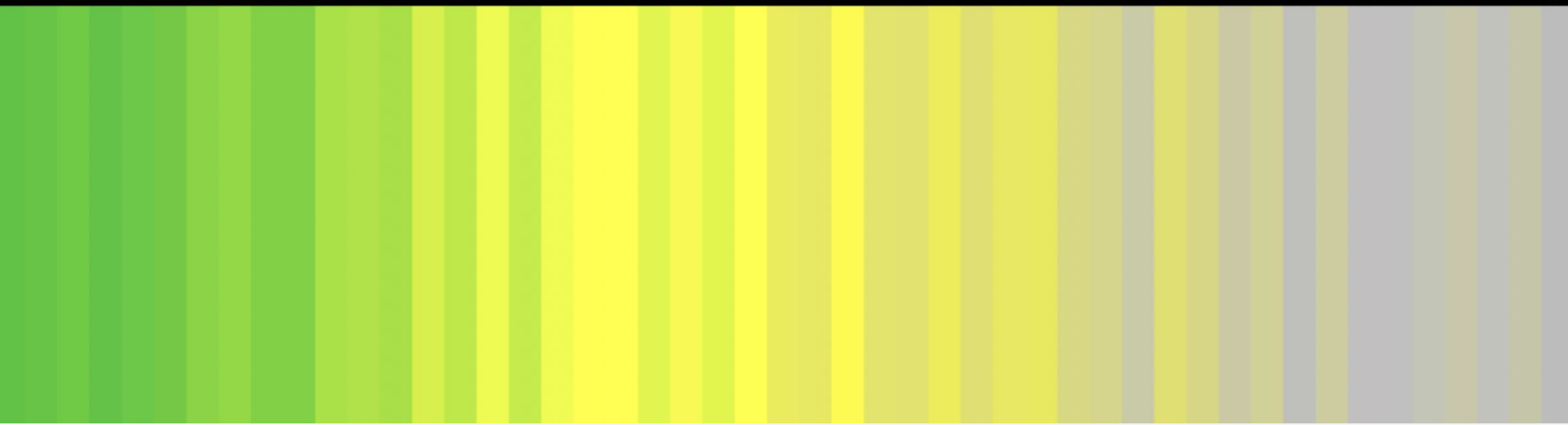
Reels and short videos





Global warming and biodiversity loss 1970 – 2018

GlobalWarming Stripes. #showyourstripes. Data Source UK Met Office CC BY 4.0
From biodiversitystripes.info Data: LPI 2022. Living Planet Index <http://stats.livingplanetindex.org/>





Ecocide symbol used by stopecocide.earth

Smaller scale

- Balloon releases
- Road developments
- Oil spills

Larger scale

- Impacts of climate change
- Tar sands
- Rapid deforestation

OVERT

Ecocide is destruction of the natural environment through agribusiness, deforestation, mining, pollution and waste, and indirectly from the impacts of Anthropogenic Global Warming and its continued denial. Ecocide is often legal, or hard to prosecute and punish. The word Ecocide is not well known.

UNINTENTIONAL

Smaller scale

- Ignoring animals in disasters
- Not knowing of microbiota
- Keeping children indoors

Larger scale

- Disavowal of climate impacts
- Normalised meat consumption
- Flight-based tourism

DELIBERATE

Smaller scale

- Littering despite clear rules
- Cutting trees in nesting season
- Shooting a protected animal

Larger scale

- Passing laws to allow ecocide
- Subsidising ecocidal industries
- Funding climate change denial

Everyday Ecocide is eco-blindness, climate denial or erasure of non-human species by media or in our cultural discourses. These small ecocides are like a daily tide, causing disconnection from nature, psychic numbing to ecological harm, and, ultimately, the emerging planetary catastrophe.

COVERT

Smaller scale

- People accepting denial
- Supporting events that damage landscapes e.g. Olympics

Larger scale

- Media promoting climate change denial
- Advertising of damaging consumer products
- Education ignoring dependence on planetary stability



THIS IS EVERYDAY ECOCIDE?

The Earth crisis over time

Colonialism

Wild land used for plantations (sugar, tea, cotton, tobacco, coffee...).
Species hunted to extinction.
People exploited & enslaved.



1500's →

Extractive industry & consumerism

Fossil fuels powered industrial revolution.
Population grew & consumed more stuff.



Sebastien Thibault

1800's →

Earth crisis

War, inequality, land-grabs, urban sprawl, fossil fuels.
Biodiversity loss & pollution.
Earth's limits are stretched and broken.



Libux771

1900's →

Climate crisis

...which includes

Extreme weather.
Disruption of Earth systems. Worsens biodiversity loss & pollution.



1970's →

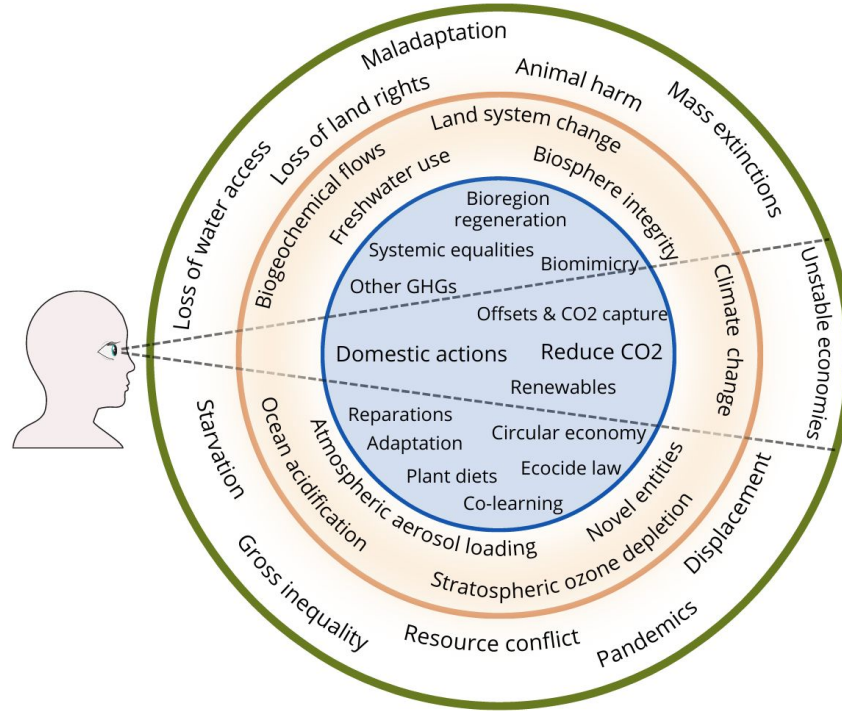
The wider Earth crisis began centuries ago but damage grew in past 70 years.



Climate impacts were harmful 50 years ago but worse are to come in future.

Earth Crisis Blinkers: a limited dominant view

Where are you looking?
And what are your blindspots?



Impacts on lives

Planetary boundaries

Solutions and tactics

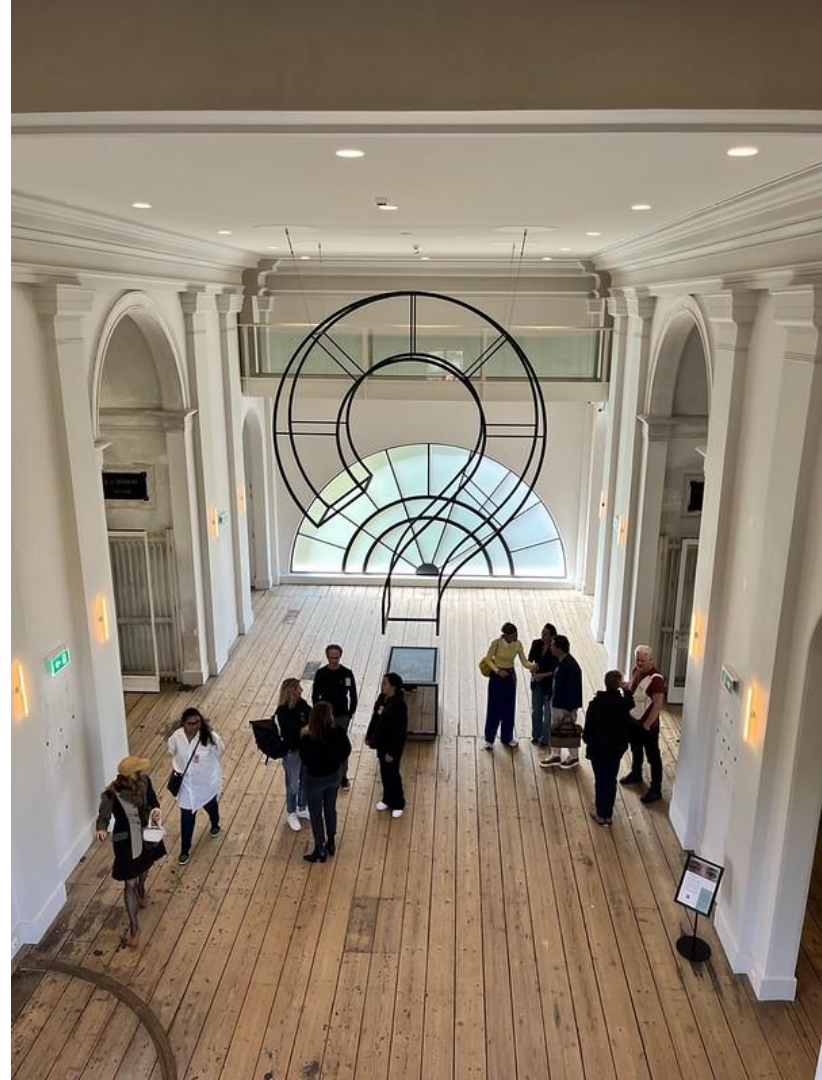
Expanded by Bridget McKenzie from Carbon Tunnel Vision by Jan Konietzko.

See more on <https://tinyurl.com/4vf63d8a>

An eco lens on museums - pathways to action

**Why put the Earth crisis
front and centre, to see
with an eco lens?**

Groote Museum, Amsterdam



Some possible outcomes

- **Engagement:** A fresh, relevant slant on collections and programmes, connecting people to cultures and places here and elsewhere, past and future?

Some possible outcomes

- **Engagement:** A fresh, relevant slant on collections and programmes, connecting people to cultures and places here and elsewhere, past and future?
- **People:** Developing nature connection, eco-capacities and agency in people?

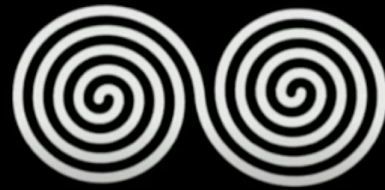
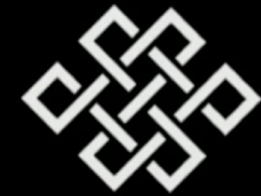
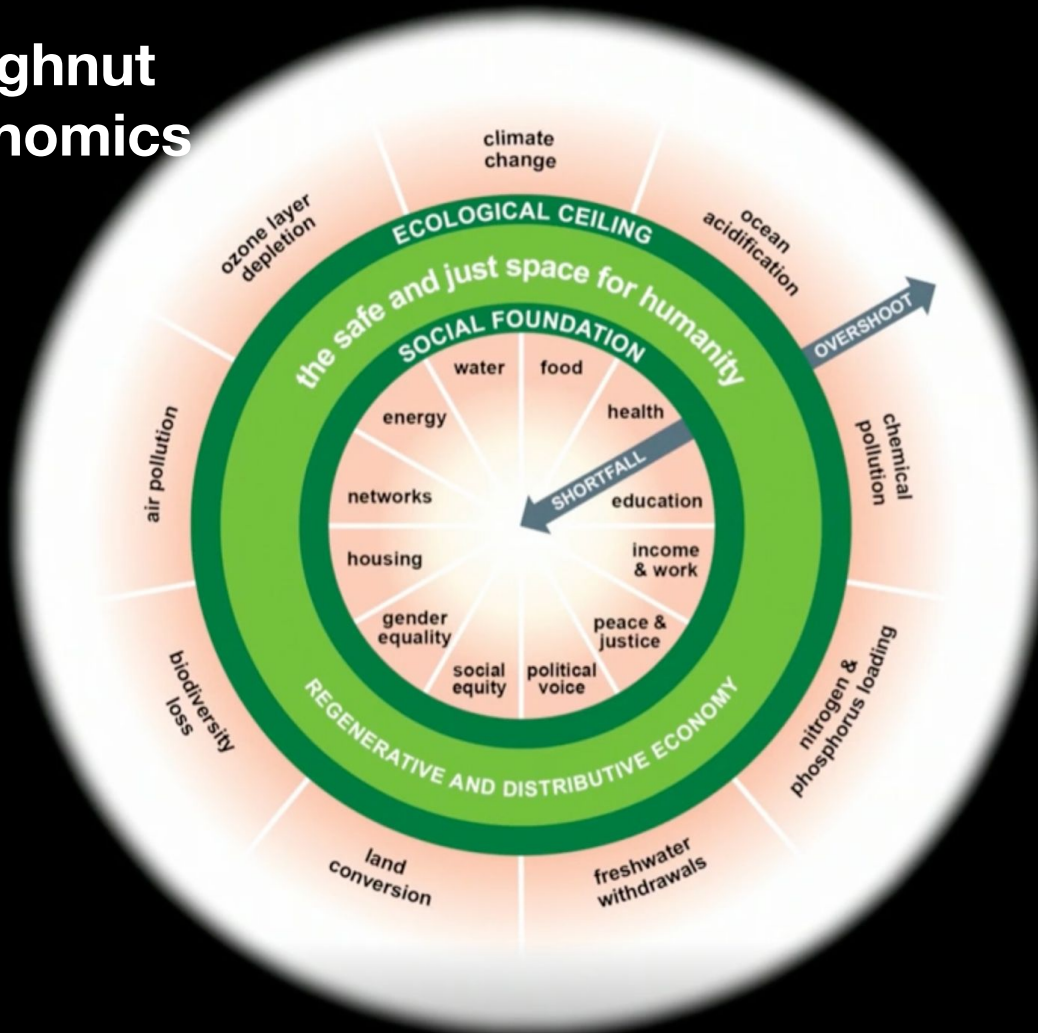
Some possible outcomes

- **Engagement:** A fresh, relevant slant on collections and programmes, connecting people to cultures and places here and elsewhere, past and future?
- **People:** Developing nature connection, eco-capacities and agency in people?
- **Organisation:** Inspire a whole organisation sustainability shift?
Being ready and resilient for impacts?

Some possible outcomes

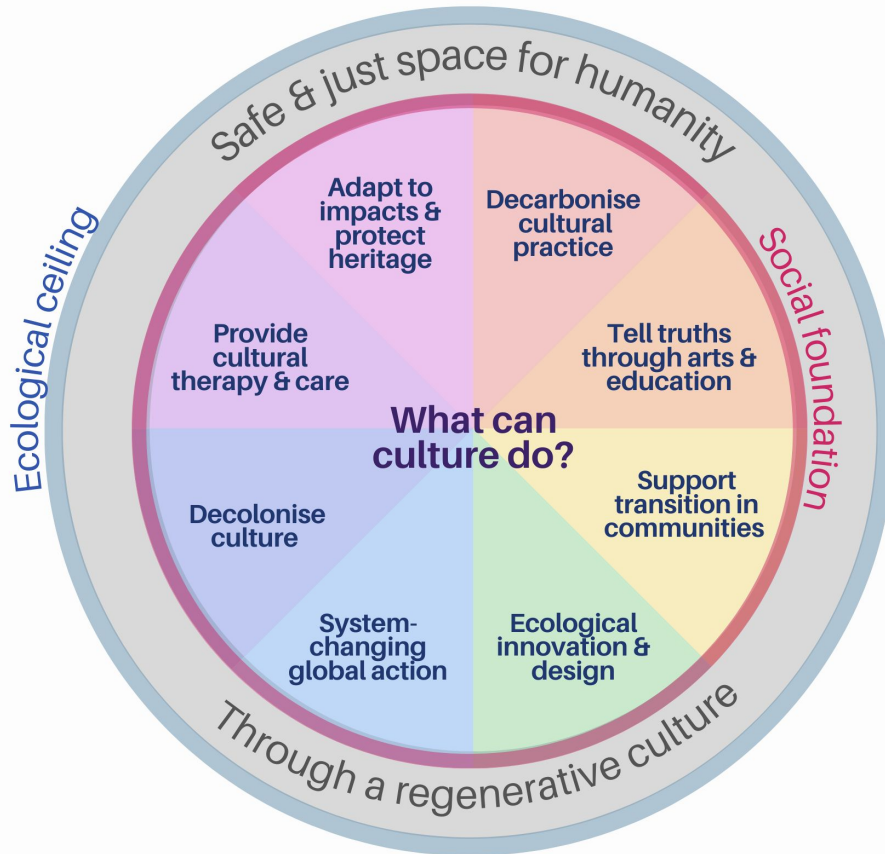
- **Engagement:** A fresh, relevant slant on collections and programmes, connecting people to cultures and places here and elsewhere, past and future?
- **People:** Developing nature connection, eco-capacities and agency in people?
- **Organisation:** Inspire a whole organisation sustainability shift?
Being ready and resilient for impacts?
- **Planet:** A positive impact on your human & biodiverse communities?

Doughnut Economics



Culture Takes Action in the Doughnut

What if we put culture & heritage in the Doughnut?



Putting cultural action in the centre of Kate Raworth's Doughnut Economics

<https://bridgetmck.medium.com/culture-takes-action-framework-29e8dfaaba24>

Decarbonising culture

Festival of Thrift sustainability policy

But tracking and offsetting carbon emissions is not enough. Our work will focus on all areas of the festival:



WATER USAGE



WASTE



ENERGY



TRAVEL



TRADERS



BIODIVERSITY



**THOUGHT
LEADERSHIP**

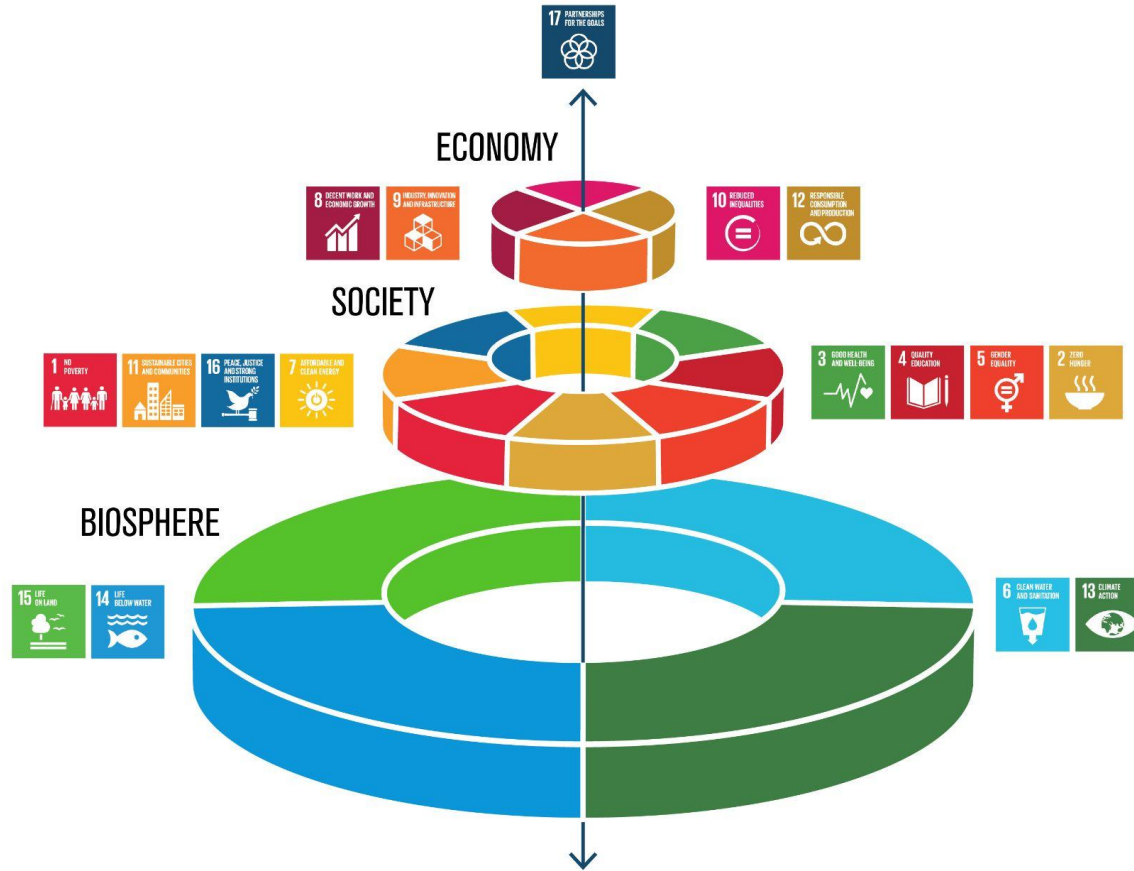


INNOVATION

New activity will build on the creative programming focussed on sustainability issues already embedded in the festival and join other initiatives already underway.

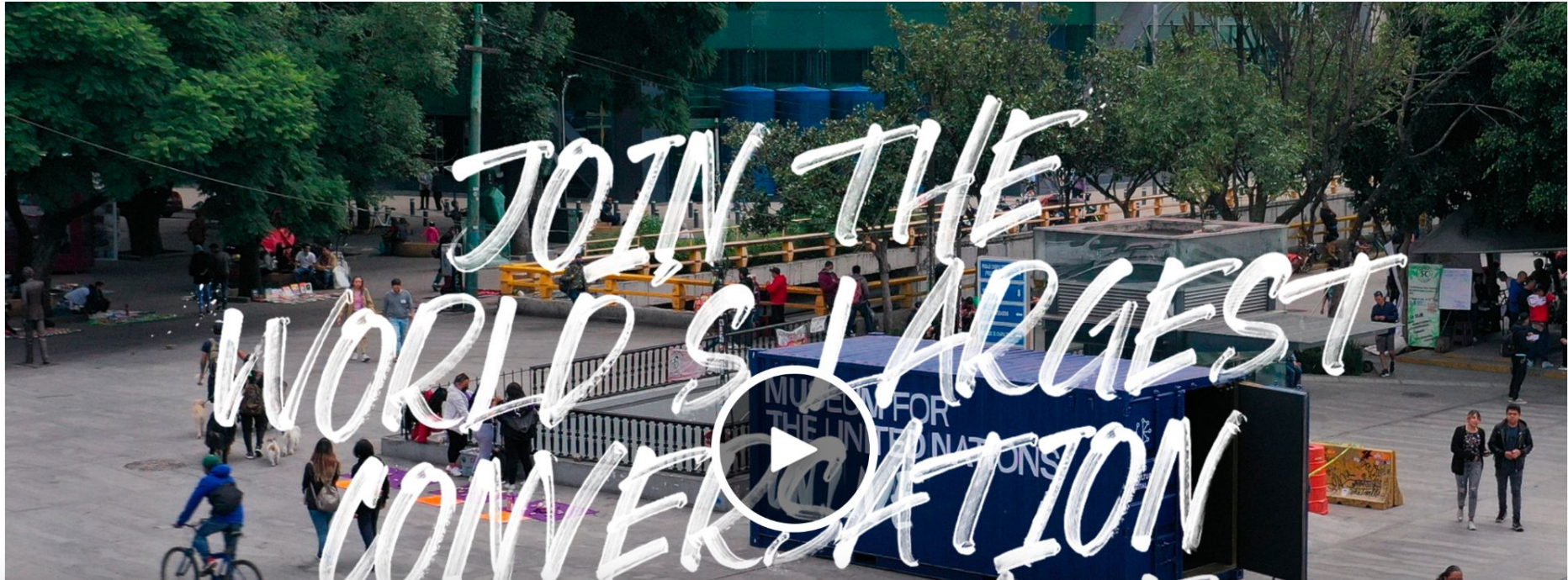
PLEASE
DONATE

System-changing global action



See our goal-by-goal guidance, aimed at the Cultural sector.

<https://climatemuseumuk.org/2021/06/03/our-guide-to-the-global-goals/>



Groote Museum, Amsterdam



Cultural Therapy and Care



A Space To Be

'A Space to Be' is a community space within Scarborough Art Gallery. The space aims to offer a warm welcome to all visitors.

Scarborough Art Gallery

- Reciprocity - gifting
- Feel, Think, Do
- Nested sense of self in place & planet
- Map it Well project
- Hello Quilt project
- Solastalgia project

Ecological innovation

The Waste Age - Design Museum, London

← EXHIBITIONS

≡ MENU

the
DESIGN
MUSEUM

PAST EXHIBITION

Waste Age: What can design do?

📅 23 OCTOBER 2021 – 20 FEBRUARY 2022

We are living in the age of waste. Is design the answer to leaving our throwaway culture behind?

#EndTheWasteAge

'Fascinating, beautiful glimpses into a brave new world of design.'

→ SIGN UP TO THE NEWSLETTER

→ BECOME A MEMBER



Support transition in communities



Imaginarium -
Hilary Cox
Condron in
Cambridge

JANUARY 20, 2023 / LEAVE A COMMENT

Decolonising culture



<https://thenaturalhistorymuseum.org/>



Adaptation, & protecting heritage



[About](#) [Culture @ COP 27](#) [Members](#) [Key Issues](#) [Resources](#) [Events](#) [News](#) [Donate](#)

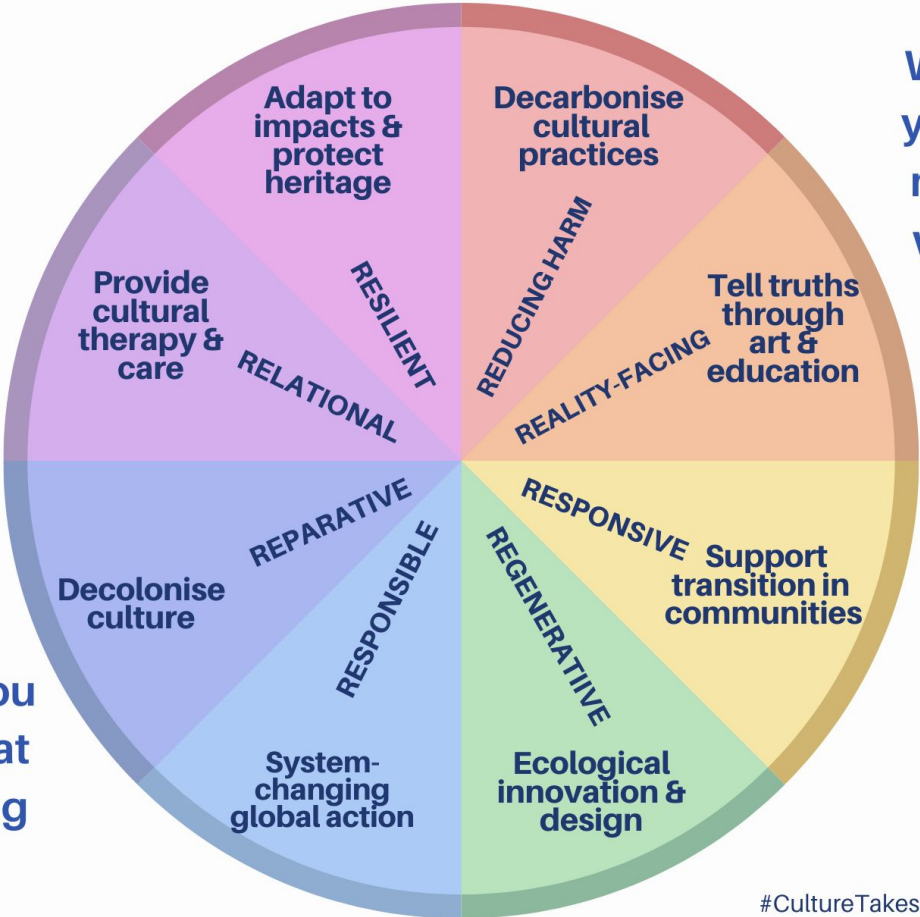
[Join](#)

An aerial photograph of Prague, Czech Republic, showing the city's dense architecture, red-tiled roofs, and the Vltava River. The Charles Bridge is visible in the foreground, crowded with people. The text "Adaptation and Resilience" is overlaid in white on the left side of the image.

Adaptation and Resilience

Culture Takes Action

8 pathways for culture to act on the Earth crisis



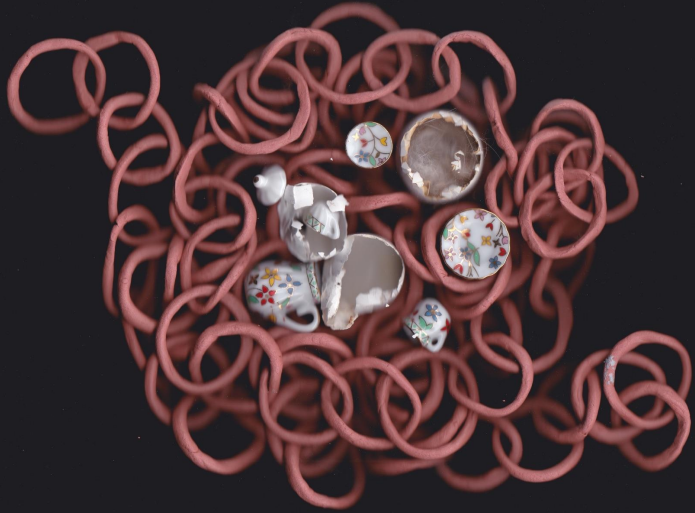
Where could you be doing more? What will you do?

Where are you strong & what are you doing there?

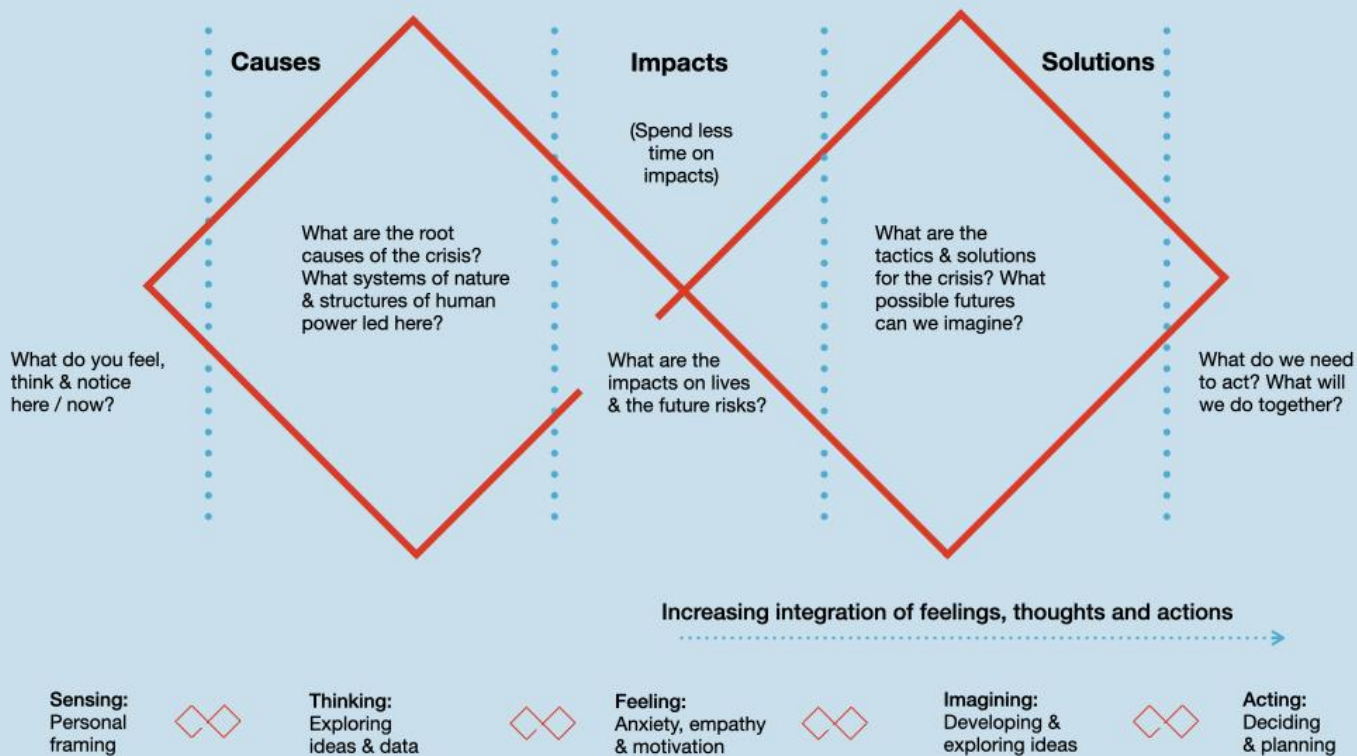


Putting an eco lens on things

CMUK working with Megan Bowyer at Tullie House

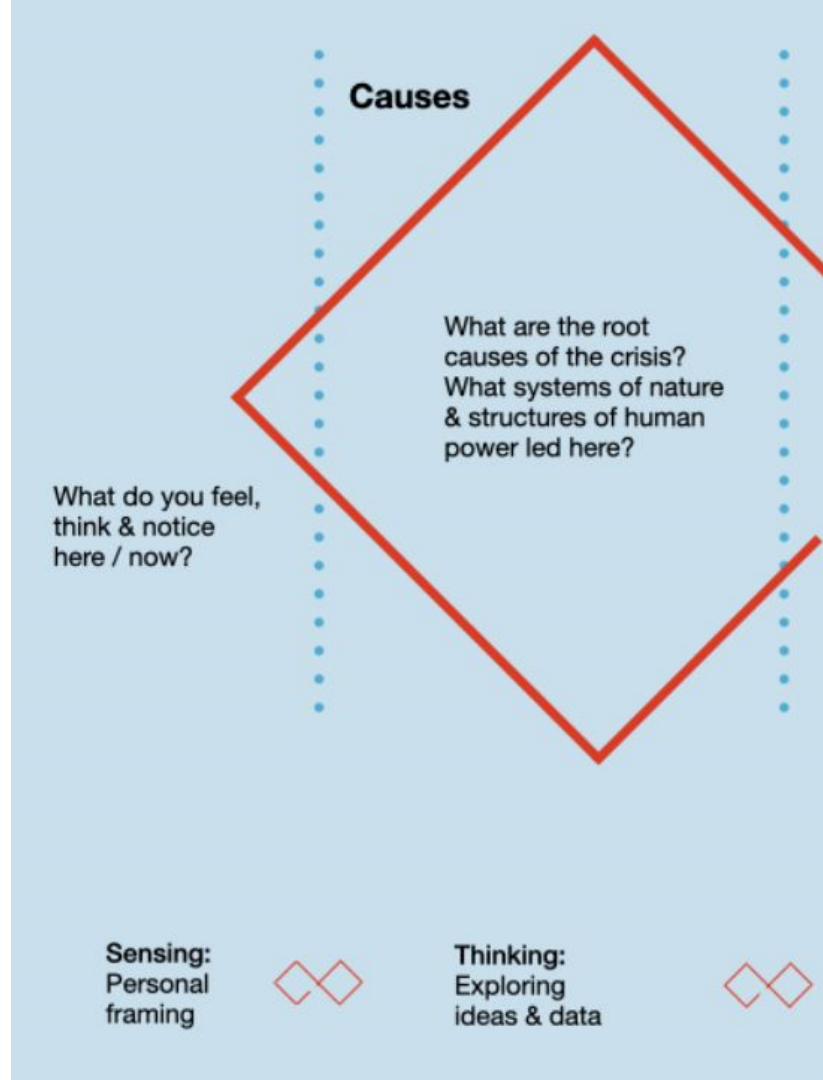


Narrative design for engaging with the Earth crisis

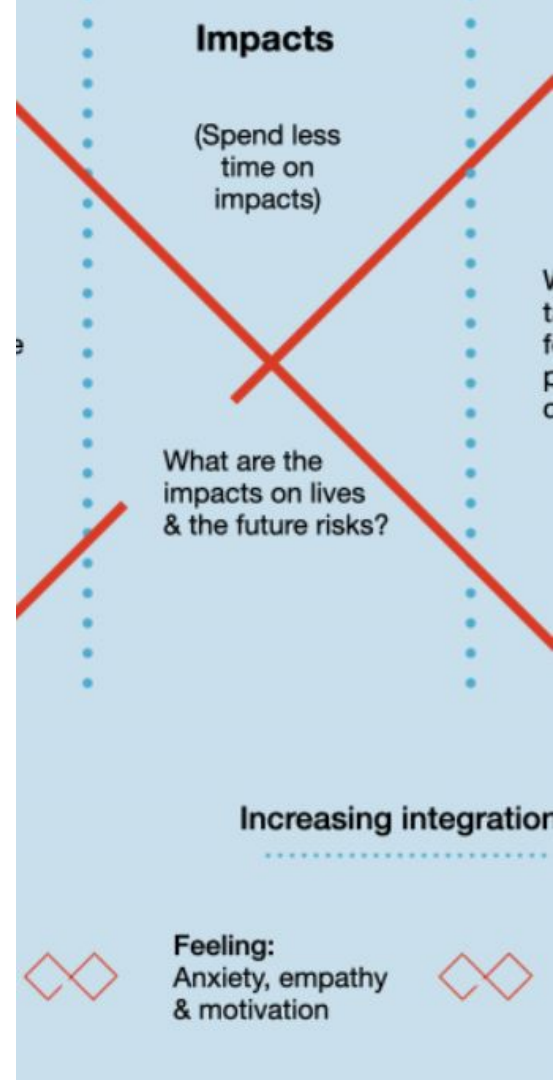


- Take one object
- Sense it for yourself
- Find a friend for your object
- Think in pairs making links between your objects
- What do they tell you about histories and causes of the crisis?

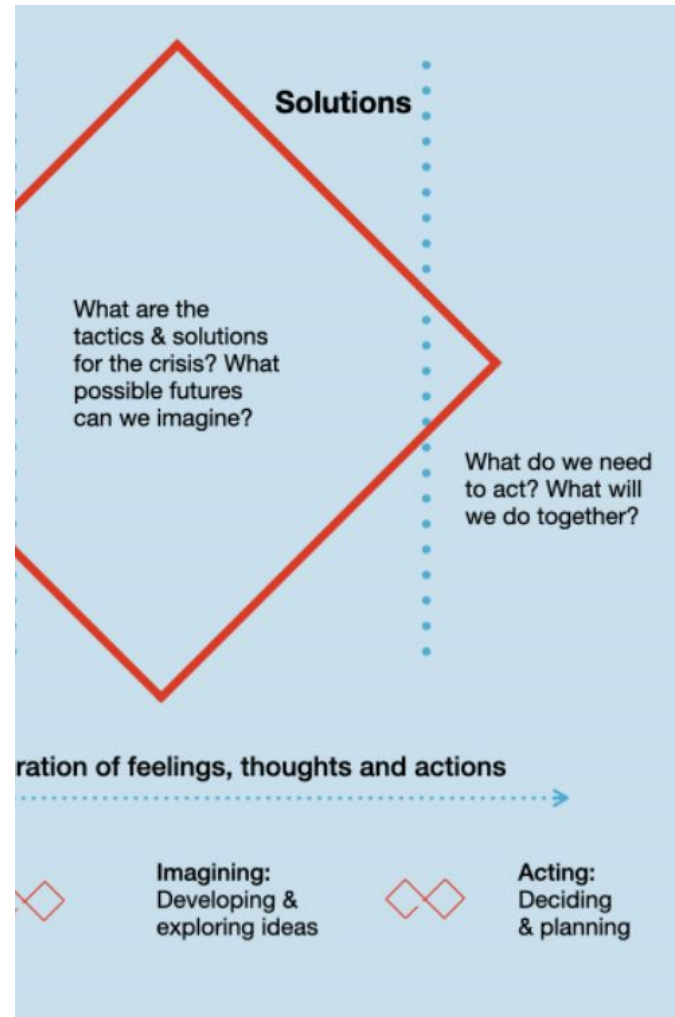
(While focusing on these objects as examples, you might also talk about collections in your museums.)



- Join with another pair
- Reflect on your emotions from your conversation
- Make an emotion map around your objects.



- In your group of four
- Tell a future story from these objects
- What can inspire people to shift their own stories and actions?



Inspirations - for browsing later

Examples of museums & exhibitions on climate and nature

<https://www.notion.so/Museum-projects-exhibitions-on-climate-nature-2f6c72ea20b4476fa4f6095de256ceef>

Selected blogposts about culture & environmental engagement

<http://bridgetmckenzie.uk/>